

NOTES :

1. Refer to rules for dimensioning semiconductor product outlines
2. Figure "A", Axial Terminal Configuration, applicable.
3. Figure "B", Peripheral Terminal Configuration, applicable.
4. Terminal end configurations are optional.
5. e_1 is measured at seating plane.

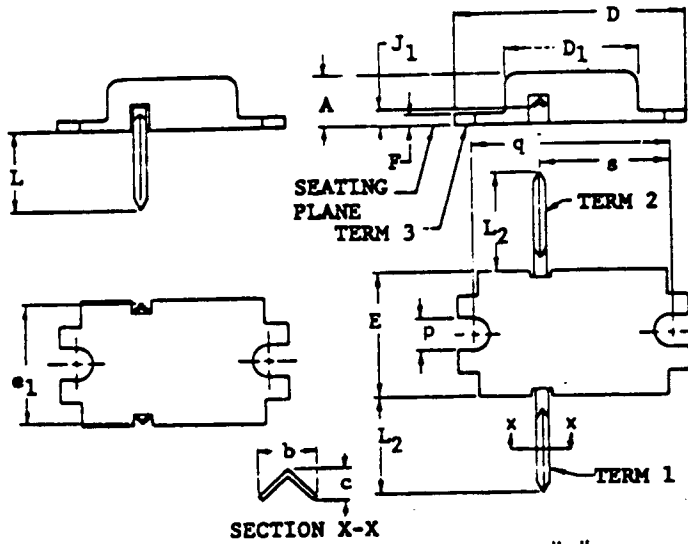


FIG. "A"
AXIAL (NOTE 2)

FIG. "B"
PERIPHERAL (NOTE 3)

VARIATIONS (ALL DIMENSIONS SHOWN IN MILLIMETERS)

SYMBOL	AA		NOTE	AB		NOTE			NOTE			NOTE	
	MIN.	MAX.		MIN.	MAX.		MIN.	MAX.		MIN.	MAX.		
	A	4.07		5.08			4.07	5.08					
b	1.15	1.52		1.15	1.52								
c	.64	1.14		.64	1.14								
D	22.61	23.11		22.61	23.11								
D1	12.20	13.08		12.20	13.08								
E	12.20	13.20		12.20	13.20								
e_1	11.69	12.82	5	—	—								
F	1.40	1.77		1.40	1.77								
J1	—	—		2.54	3.04								
L	9.40	11.43		—	—								
L2	—	—		10.54	14.22								
P	3.26	3.81		3.26	3.81								
q	18.80	19.30		18.80	19.30								
s	12.70	13.20		12.70	13.20								
NOTE	1, 2, 4			1, 3, 4									
REF.	Item 240C			Item 240G									
ISSUE	A Oct. 1970			A Oct. 1970									
JEDEC SEMICONDUCTOR DEVICE OUTLINES				TITLE FLANGE-MOUNTED HEADER FAMILY (Axial & Peripheral Leads)				ISSUE B		DATE Dec 1977		T0-219 VARIATION AA THRU AB	

NOTES:

1. Refer to rules for dimensioning semiconductor product outlines
2. Figure "A", Axial Terminal Configuration, applicable.
3. Figure "B", Peripheral Terminal Configuration, applicable.
4. Terminal end configurations are optional.
5. e_1 is measured at seating plane.

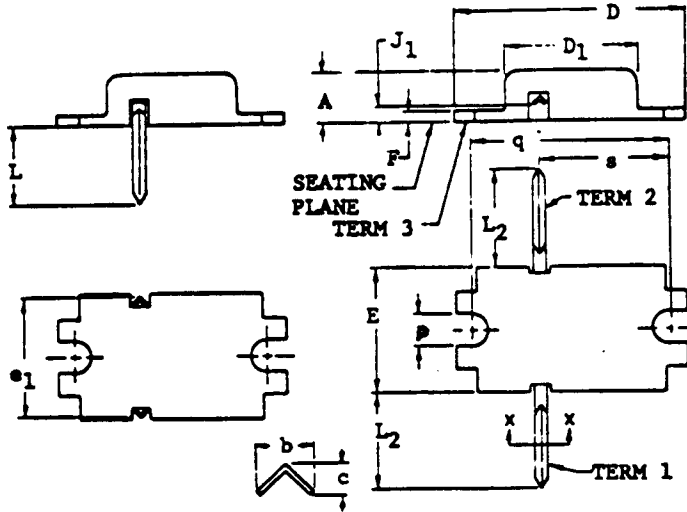


FIG. "A"
AXIAL (NOTE 2)

FIG "B"
PERIPHERAL (NOTE 3)

VARIATIONS (ALL DIMENSIONS SHOWN IN INCHES)

SYMBOL	AA		NOTE	AB		NOTE			NOTE			NOTE	
	MIN.	MAX.		MIN.	MAX.		MIN.	MAX.		MIN.	MAX.		
	A	.160		.200			.160	.200					
b	.045	.060		.045	.060								
c	.025	.045		.025	.045								
D	.890	.910		.890	.910								
D ₁	.480	.515		.480	.515								
E	.480	.520		.480	.520								
e ₁	.460	.505	5	—	—								
F	.055	.070		.055	.070								
J ₁	—	—		.100	.120								
L	.370	.450		—	—								
L ₂	—	—		.415	.560								
p	.128	.150		.128	.150								
q	.740	.760		.740	.760								
s	.500	.520		.500	.520								
NOTE	1, 2, 4			1, 3, 4									
REF.	Item 240G			Item 240G									
ISSUE	A Oct. 1970			A Oct. 1970									
JEDEC SEMICONDUCTOR DEVICE OUTLINES				TITLE FLANGE-MOUNTED HEADER FAMILY (Axial & Peripheral Leads)				ISSUE B		DATE Dec. 1977		T0-219 VARIATION AA THRU AB	